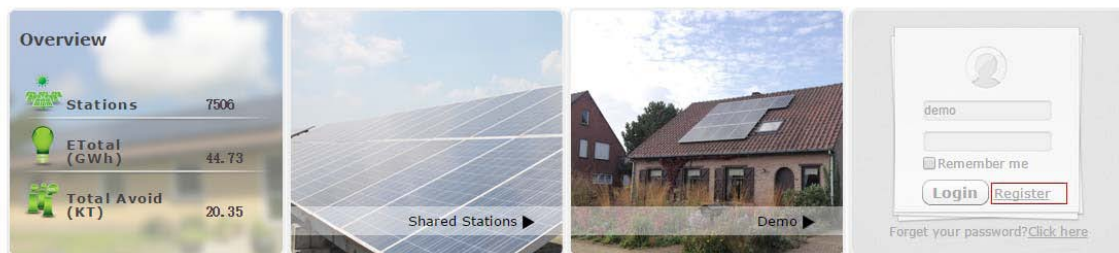


Renosola Online Monitoring System Introduction

This document briefs the basic function module of Renosola Online Monitoring System. We hope it can help to understand the system easily and use it flexibly and effectively. Thank you very much for using Renosola products.

User need to register from Renosola online Monitoring website, website: <http://replusweb.renosola.com:86/>

Click the Register button in the middle of the page, See Pic 1



Pic 1

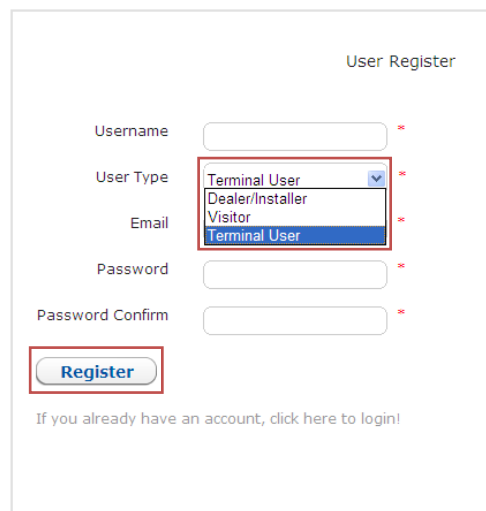
Then fill in all the information in next page.

User name is for Login

User Type please choose 'Terminal User'

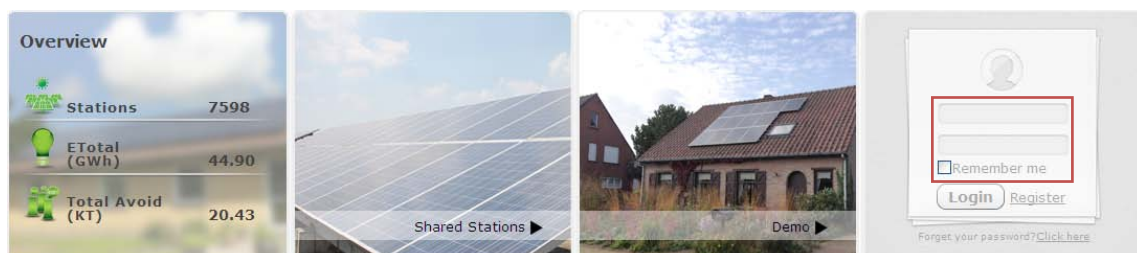
Email is for forget password function, system will send the password to this Email

After all the information is filled in, click the 'Register' button, then the account is created successfully. See Pic 2



Pic 2

Login with the 'username' and 'password' just registered. See Pic 3



Pic 3

After login, there are 6 main functions on the top of the page, see Pic 4

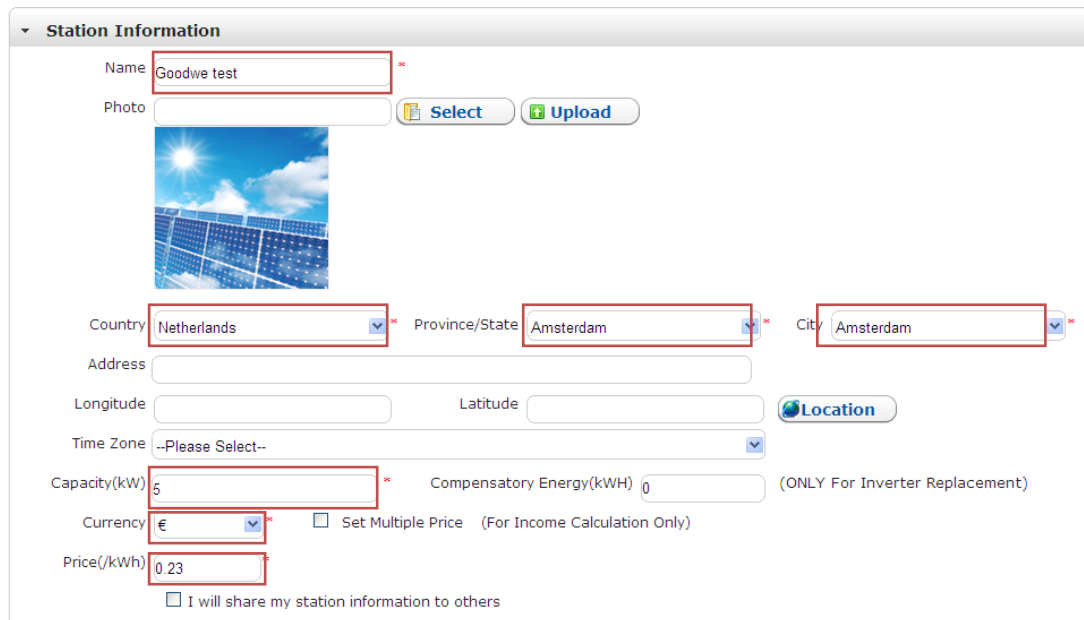
My Stations | Create Station | Shared Stations | User Center | Support | Station Map

Pic 4

Create Station

User needs to create station. Click the 'Create Station' button and fill in the information in next page.

All the blank with * mark is the necessary information, must be fill in, see Pic 5

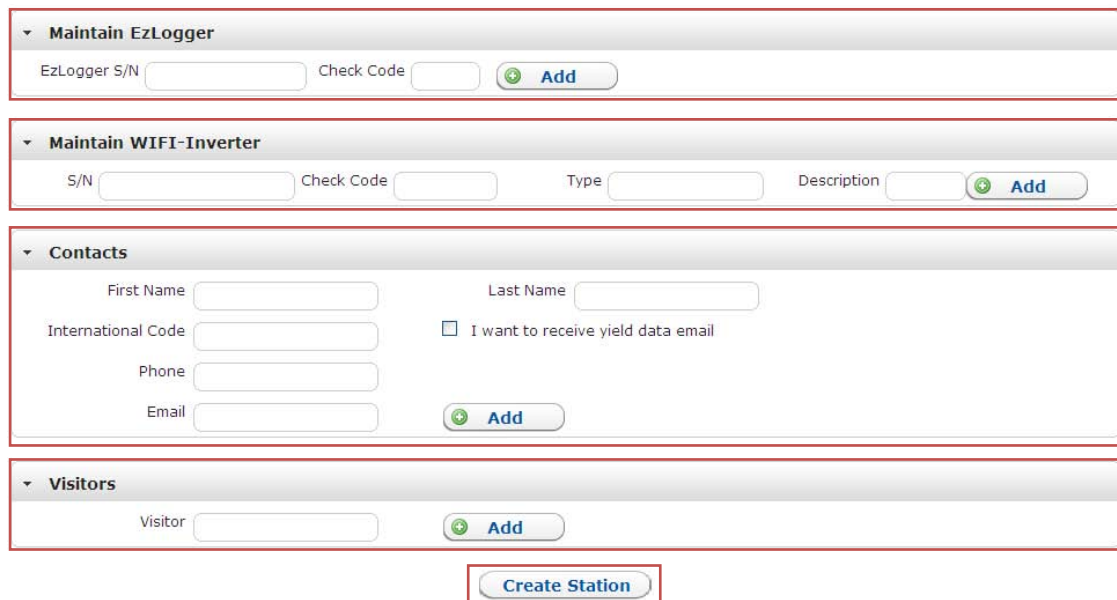


The form is titled 'Station Information' and contains the following fields and options:

- Name: Text input with value 'Goodwe test' and a red asterisk (*) indicating it is required.
- Photo: Image upload area with a 'Select' button and an 'Upload' button. A placeholder image of solar panels is shown.
- Country: Dropdown menu with 'Netherlands' selected and a red asterisk (*).
- Province/State: Dropdown menu with 'Amsterdam' selected and a red asterisk (*).
- City: Dropdown menu with 'Amsterdam' selected and a red asterisk (*).
- Address: Text input field.
- Longitude: Text input field.
- Latitude: Text input field.
- Location: Button with a location pin icon.
- Time Zone: Dropdown menu with '--Please Select--' selected.
- Capacity(kW): Text input with value '5' and a red asterisk (*).
- Compensatory Energy(kWh): Text input with value '0'.
- Currency: Dropdown menu with '€' selected and a red asterisk (*).
- Set Multiple Price: Checkbox, currently unchecked.
- Price(/kWh): Text input with value '0.23' and a red asterisk (*).
- I will share my station information to others: Checkbox, currently unchecked.

Pic 5

The next page is the EzLogger information, Inverter information, Contact information and Visitors information etc. See Pic 6.



The form is divided into four sections:

- Maintain EzLogger**: Fields for 'EzLogger S/N' and 'Check Code', followed by an 'Add' button.
- Maintain WIFI-Inverter**: Fields for 'S/N', 'Check Code', 'Type', and 'Description', followed by an 'Add' button.
- Contacts**: Fields for 'First Name', 'Last Name', 'International Code', 'Phone', and 'Email'. There is also a checkbox for 'I want to receive yield data email'. An 'Add' button is at the bottom.
- Visitors**: Field for 'Visitor' followed by an 'Add' button.

At the bottom of the page, there is a 'Create Station' button.

Pic 6

The 'Maintain EzLogger' is for the EzLogger information, please fill in the S/N and Check Code of the EzLogger in this part (All these info could be found on the EzLogger or the box of EzLogger) then press 'Add', if all the information is correct, this EzLogger should be add to this account. See Pic 6.

The 'Maintain WIFI-Inverter' is for the Inverter information, please fill in the S/N and Check Code of the inverter in this part (All these info could be found on the inverter), then press 'Add', if all the information is correct, this Inverter should be add to this account. See Pic 6.





Contact is for the end user, this part should fill in the end user information, such as Name, Phone No., Email etc. See Pic 6.

Visitor function: the Owner could let 5 visitors to view this station, the visitor account can only visit, cannot modify the information of this station. See Pic 6.

After all the information is filled in, just click the 'Create Station' button, the station is created successfully. See Pic 6.

My Stations

After creation, the station can be found in 'My Stations', user can 'Edit' or 'Delete' the station by using the button, Click the Station can see all the detail of the Station, See Pic 7

Station Map									
	Name	Capacity (kW)	Power (kW)	ETotal	Creation Date	Status	Address	Edit	Delete
	's Power Station	4.500	0.000	1.30 MWh	2014/11/10	Offline		 Edit	 Delete
1 of 1 									

Pic 7

All the details can be found after click the station, 'Overview' can see the performance of inverter, See 8



Pic 8

'History' can see the data on exactly date, See Pic 9



Pic 9

'Warning' can check all the error of inverter, can be use for analysis the problem, See Pic 10.

S/N	Type	Description	Error Code	Error Message	Error DateTi
14600SSU	4600	4600	E22	Gournd I Failure	11/22/2014 PM

Pic 10

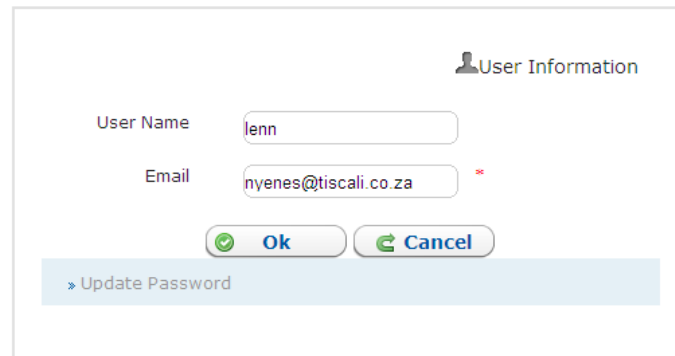
'ARCB' is for Anti Reverse Current Box, all the anti reverse current data can be found in this page, See Pic 11

	L1	L2	L3	Total
Grid Voltage[V]				N/A
Grid Current[A]				N/A
Grid Power[kW]				N/A
ETotal[kWh]				
Consumption[kWh]				
From Grid[kWh]				
Feed-in Grid[kWh]				
Load[kW]				
Reactive Power Energy[kVarh]				
Installation Capacity[kW]				
Action Threshold[kW]				
ARCF Status				
Time				

Pic 11

User Center

User Center is for the user to modify the basic information, such as: user name, email etc. See Pic 14

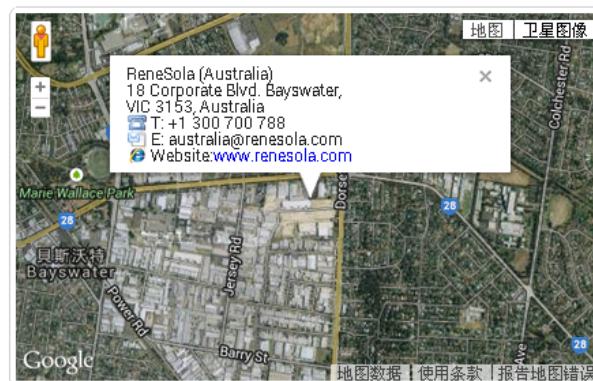


A screenshot of a web form titled "User Information" with a person icon. It contains two input fields: "User Name" with the value "lenn" and "Email" with the value "nyenes@tiscali.co.za". Below the fields are two buttons: "Ok" with a green checkmark icon and "Cancel" with a green X icon. At the bottom, there is a link "Update Password" with a right-pointing arrow.

Pic 12

Support

Support page shows all the office and technical support center all over the world. See Pic 13



ReneSola (U.S.A)
301 Howard St, Suite 850,
San Francisco, CA 94105.
T: +1 415 852 7418
E: america@renesola.com
Website: www.renesola.com

ReneSola (Australia)
18 Corporate Blvd.
Bayswater, Australia
T: +1 300 700 788
E: australia@renesola.com
Website: www.renesola.com

ReneSola (Europe)
Renesola Deutschland GmbH,
Lyoner Strasse 15, 60529
Frankfurt/M, Germany
T: +49 69 663 786 9-0
E: europe@renesola.com

Pic 13